



# SKOPES

ESTABLISHED 1948

CORPORATEWEAR  
COLLECTIONS



Every day provides an opportunity to make or break your customer's perception of your business or organisation because first impressions leave lasting impressions.

The most important ingredient in creating that right impression is you.

Delivering exceptional service is made that much easier when you look good because looking good enables you to perform with confidence.

This is reflected in the latest Skopes corporate clothing collections which have been designed to offer exceptional style and comfort with choice in mind.

Looking smart, professional and approachable has never been easier.

Whichever collection you choose you will be buying into a 60 year heritage of innovation, expertise, value and service that the Skopes brand represents.

Our increasingly strong presence on the High Street working with leading retailers means our design team are at the sharp end of creating collections which are modern, relevant, designed to fit well and perform to the highest standards.

Skopes corporate clothing collections are supported from stock and available from professional corporate clothing suppliers who will be able to provide expert guidance and advice on which collection will be most suitable for you.



[www.lookcustom.co.uk](http://www.lookcustom.co.uk)

01923 800013

[sales@lookcustom.co.uk](mailto:sales@lookcustom.co.uk)



Quality  
& Service  
you can  
trust

Unit 26  
The Metro Centre  
Tolpits Lane  
Watford  
WD18 9XD  
T: 01923 800013  
F: 01923 800014  
[www.lookcustom.co.uk](http://www.lookcustom.co.uk)



## Business Boutique

Design led corporate fashion. A premium, sharply styled and beautifully cut 8 piece tailoring collection provides the platform for a capsule collection of knitwear, shirts, blouses and accessories in three distinctive colour coordinating palettes. Business boutique provides versatile options to create a bespoke look and feel for a confident modern brand identity.



## New Contemporary Collection

The direct replacement for Skopes U:P Ultimate Performance Collection but now with twice the durability of the original and an updated range of styles fittingly enough to be renamed Contemporary Collection.



## 247 Mode Collection

Skopes best selling collection in a sophisticated wool rich fabric with Teflon fabric protection and Lycra for comfort. 24 7 mode is all about wonderful attention to detailing providing both stylish and practical benefits. The collection has been further developed to include a wider range of colours and now offers male and female styles across five colours options.



## Essentials Collection

With 1000s of satisfied wearers across a broad range of businesses Essentials Collection has established itself as the market leader for value. This women's only collection uses a superior double layer polyester fabric which is the ultimate in easy care with wonderful drape. New additions include a stunning dress option, new style trouser and waistcoat.



web

[www.lookcustom.co.uk](http://www.lookcustom.co.uk)

call

01923 800013

email

[sales@lookcustom.co.uk](mailto:sales@lookcustom.co.uk)





## SOMEWHERE IN THIS CATALOGUE THERE IS A COLLECTION JUST RIGHT FOR YOUR COMPANY.

A professional corporate clothing supplier will be able to explain the differences between each Skopes collection and after understanding your requirements, working environment and budget make an appropriate recommendation.

### A COST EFFECTIVE SOLUTION.

The advantages in using our stock supported collections mean that you only need to buy to your exact requirements so no wastage, no cash tied up, no long term commitments needed. New starters can easily be catered for as there are no minimum order quantities. Sizing sets can be ordered to ensure wearers receive the correct fit and then returned.

### PLENTY OF CHOICE.

To help you towards making an informed choice every Skopes collection carries its own distinct branding and is followed by a summary which includes key attributes and the most common environments the collection is worn in. If you are not in the category shown it doesn't mean it's not right for you so take the advice of your supplier.

### WHY CHOOSE SKOPES?

Skopes support a stock holding in excess of £3m. Each collection comes in the most comprehensive range of sizes and fittings available from any supplier.

Our collections are worn by many blue chip businesses across a wide range of industries from hotels, airlines, retailers, government agencies, financial services and many, many others.

Confidence comes in the knowledge that we use an accredited, independent laboratory to test all our garments to the very highest standards. Part of our development process also includes wearer trialling our clothing to ensure any issues are ironed out well before our collections are made available to you.

Skopes is ISO14001 accredited (Environmental Management System) and operates a corporate and social responsibility policy working with our manufacturing partners.

**LOOK CUSTOM**  
LIMITED



**B**  
**B**  
**BUSINESS**  
*boutique*  
BY SKOPES  
ESTABLISHED 1948

This truly inspirational, design led capsule collection brings a totally fresh, new approach to corporate dressing. A premium quality 8 piece tailoring collection of true statement pieces and superbly detailed provides the platform for three distinct colour palettes of beautifully considered coordinating knitwear, shirts, blouses and accessories enabling you to promote a confident, vibrant and modern brand identity.





**BUSINESS**  
*boutique*

BY SKOPES  
ESTABLISHED 1948

*Tailored to Perfection*

INSPIRED BY



*City & Suburban*

SHARPLY STYLED ~ BEAUTIFULLY CUT ~ PREMIUM TAILORING

 **LOOK CUSTOM**  
LIMITED

web

[www.lookcustom.co.uk](http://www.lookcustom.co.uk)

call

01923 800013

email

[sales@lookcustom.co.uk](mailto:sales@lookcustom.co.uk)

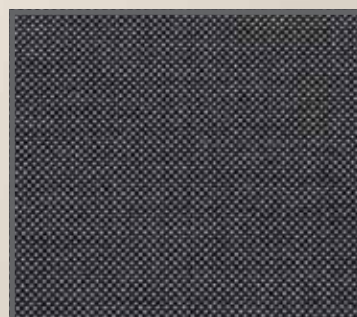


Machine  
Washable



Stretch  
Comfort

**A Birdseye Shift Dress**  
**Order** Ritz WWD603  
**Sizes** 6-20 Regular  
Belt Included



Machine Washable



Stretch Comfort



**B Birdseye Waistcoat**  
**Order** Berkeley MM1226  
**Sizes** 36-52 Regular

**C Birdseye Tailored Fit Trousers**  
**Order** Eaton MM7726  
**Sizes** 30-40 Short  
30-40 Regular  
30-40 Long  
30-48 Xlong

**D Birdseye Waistcoat**  
**Order** Langham WWW903  
**Sizes** 6-24 Regular

**E Birdseye Pencil Skirt**  
**Order** Royale WWS803  
**Sizes** 6-16 Short  
6-24 Regular  
6-24 Long  
Belt Included



**A** Birdseye Tailored Fit Jacket  
**Order** Waldorf WWJ503  
**Sizes** 6-16 Petite  
6-24 Regular  
8-18 Tall

**B** Birdseye Pencil Skirt  
**Order** Royale WWS803  
**Sizes** 6-16 Short  
6-24 Regular  
6-24 Long  
Belt Included

**C** Birdseye Bootcut Trouser  
**Order** Dorchester WWT703  
**Sizes** 6-20 Short  
6-24 Regular  
6-24 Long  
Belt Included



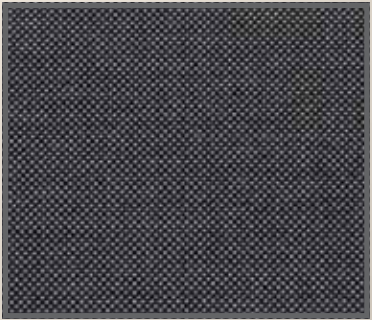
**B** BUSINESS  
boutique



**A** Birdseye Tailored Fit Jacket  
**Order** Grosvenor MM1726  
**Sizes** 36-46 Short  
36-52 Regular  
38-46 Long

**B** Birdseye Tailored Fit Trouser  
**Order** Eaton MM7726  
**Sizes** 30-40 Short  
30-40 Regular  
30-40 Long  
30-48 Xlong

**C** Birdseye Waistcoat  
**Order** Berkeley MM1226  
**Sizes** 36-52 Regular







**BB**  
**BUSINESS**  
*boutique*  
BY SKOPES  
ESTABLISHED 1948

*Fuchsia & Lilac*

INSPIRED BY



*Summer Garden*

VIBRANT ~ FRESH ~ MODERN

**LOOK CUSTOM**  
LIMITED

web

[www.lookcustom.co.uk](http://www.lookcustom.co.uk)

call

01923 800013

email

[sales@lookcustom.co.uk](mailto:sales@lookcustom.co.uk)

*Add a splash of colour...*



A Charcoal Fine Knit Cardigan  
Order Spectrum SWK405  
Sizes XS (6) S (8/10) M (12/14)  
L (16/18) XL (20/22) 2XL (24/26)

Shown With Petals Blouse And  
Palette Scarf.



**B** BUSINESS  
boutique

The Spectrum Cardigan also works  
beautifully when teamed with Ruffle Knit  
Sweater for the perfect twin set.

A Lilac Ruffle Knit Sweater  
Order Panorama SWK412  
Sizes XS (6) S (8/10) M (12/14)  
L (16/18) XL (20/22) 2XL (24/26)

Shown With Palette Scarf







**A** Fuchsia Ruffle Knit Sweater  
Order Panorama SWK413  
Sizes XS (6) S (8/10) M (12/14)  
L (16/18) XL (20/22) 2XL (24/26)



**B** Lilac Ruffle Knit Sweater  
Order Panorama SWK412  
Sizes XS (6) S (8/10) M (12/14)  
L (16/18) XL (20/22) 2XL (24/26)



**C** Navy Fine Knit Cardigan  
Order Spectrum SWK408  
Sizes XS (6) S (8/10) M (12/14)  
L (16/18) XL (20/22) 2XL (24/26)



**D** Petals Soft Touch Blouse  
Order Petals WWB113  
Sizes 6-24



**E** Lilac Pinstripe Blouse  
Order London WWB116  
Sizes 6-24

*Add a splash of colour to your collection...*



Palette Chiffon Scarf  
Order WAB122



Club Chiffon Scarf  
Order WAB125



Diamonds Chiffon Scarf  
Order WAB128



Petals Chiffon Scarf  
Order WAB119





*Add a splash of colour...*

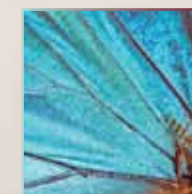


**BUSINESS**  
*boutique*

BY SKOPES  
ESTABLISHED 1948

*Aqua & Plum*

INSPIRED BY



*Mediterranean Mosaic*

COOL ~ CONTEMPORARY ~ SLEEK

 **LOOK CUSTOM**  
LIMITED

web

[www.lookcustom.co.uk](http://www.lookcustom.co.uk)

call

01923 800013

email

[sales@lookcustom.co.uk](mailto:sales@lookcustom.co.uk)



A Navy Fine Knit Cardigan  
 Order Spectrum SWK407  
 Sizes XS (6) S (8/10) M (12/14)  
 L (16/18) XL (20/22) 2XL (24/26)

Shown With Petals Blouse And  
 Palette Scarf



The Spectrum Cardigan also works  
 beautifully when teamed with Ruffle Knit  
 Sweater for the perfect twin set.



A Aqua Ruffle Knit Sweater  
 Order Panorama SWK410  
 Sizes XS (6) S (8/10) M (12/14)  
 L (16/18) XL (20/22) 2XL (24/26)

Shown With Palette Scarf







**A** Charcoal Fine Knit Cardigan  
Order Spectrum SWK404  
Sizes XS (6) S (8/10) M (12/14)  
L (16/18) XL (20/22) 2XL (24/26)



**B** Aqua Ruffle Knit Sweater  
Order Panorama SWK410  
Sizes XS (6) S (8/10) M (12/14)  
L (16/18) XL (20/22) 2XL (24/26)



**C** Plum Ruffle Knit Sweater  
Order Panorama SWK411  
Sizes XS (6) S (8/10) M (12/14)  
L (16/18) XL (20/22) 2XL (24/26)



**D** Petals Soft Touch Blouse  
Order Petals WWB112  
Sizes 6-24



**E** Aqua Pinstripe Blouse  
Order London WWB115  
Sizes 6-24

*Add a splash of colour to your collection...*



Palette Chiffon Scarf  
Order WAB121



Club Chiffon Scarf  
Order WAB124



Diamonds Chiffon Scarf  
Order WAB127



Petals Chiffon Scarf  
Order WAB118



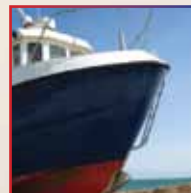


*Add a splash of colour...*

**B**  
**B**  
**BUSINESS**  
*boutique*  
BY SKOPES  
ESTABLISHED 1948

*Red, White & Blue*

INSPIRED BY



*Perfect Panorama*

CRISP ~ BOLD ~ BRIGHT

**LOOK CUSTOM**  
**LIMITED**

web

[www.lookcustom.co.uk](http://www.lookcustom.co.uk)

call

01923 800013

email

[sales@lookcustom.co.uk](mailto:sales@lookcustom.co.uk)



The Spectrum Cardigan also works beautifully when teamed with Ruffle Knit Sweater for the perfect twin set.



**A** Charcoal Fine Knit Cardigan  
**Order** Spectrum SWK406  
**Sizes** XS (6) S (8/10) M (12/14)  
L (16/18) XL (20/22) 2XL (24/26)

Shown With Petals Blouse

**A** Red Ruffle Knit Sweater  
**Order** Panorama SWK414  
**Sizes** XS (6) S (8/10) M (12/14)  
L (16/18) XL (20/22) 2XL (24/26)

Shown With Palette Scarf







**A** Navy Fine Knit Cardigan  
Order Spectrum SWK409  
Sizes XS (6) S (8/10) M (12/14)  
L (16/18) XL (20/22) 2XL (24/26)



**B** Navy Ruffle Knit Sweater  
Order Panorama SWK415  
Sizes XS (6) S (8/10) M (12/14)  
L (16/18) XL (20/22) 2XL (24/26)



**C** Red Ruffle Knit Sweater  
Order Panorama SWK414  
Sizes XS (6) S (8/10) M (12/14)  
L (16/18) XL (20/22) 2XL (24/26)



**D** Petals Soft Touch Blouse  
Order Petals WWB114  
Sizes 6-24



**E** Pale Blue Pinstripe Blouse  
Order London WWB117  
Sizes 6-24

*Add a splash of colour to your collection...*



Palette Chiffon Scarf  
Order WAB123



Club Chiffon Scarf  
Order WAB126



Diamonds Chiffon Scarf  
Order WAB129



Petals Chiffon Scarf  
Order WAB120





B



Knitwear, shirts and ties for men perfectly colour coordinated to match the womenswear

**A** Navy Fine Knit Sweater  
Order Primo MMK403  
Sizes S M L XL 2XL

**B** Charcoal Fine Knit Sweater  
Order Primo MMK402  
Sizes S M L XL 2XL

**LOOK CUSTOM**  
LIMITED



**A** Lilac Classic Fit Pinstripe Shirt  
Order London SS2002  
Sizes 14 1/2 15 15 1/2 16 16 1/2  
17 17 1/2 18 18 1/2 19

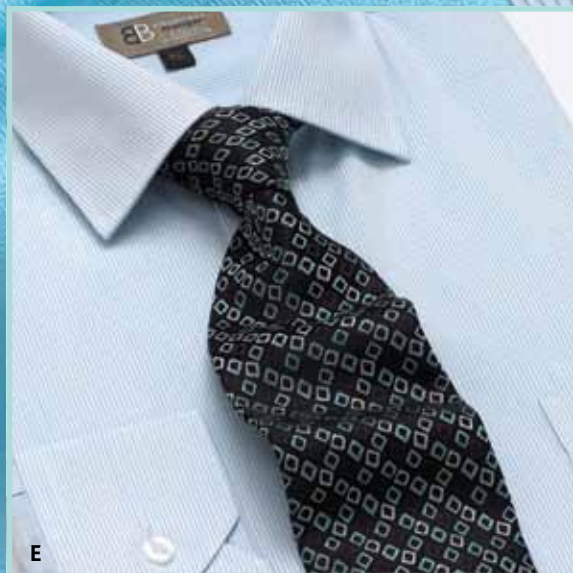
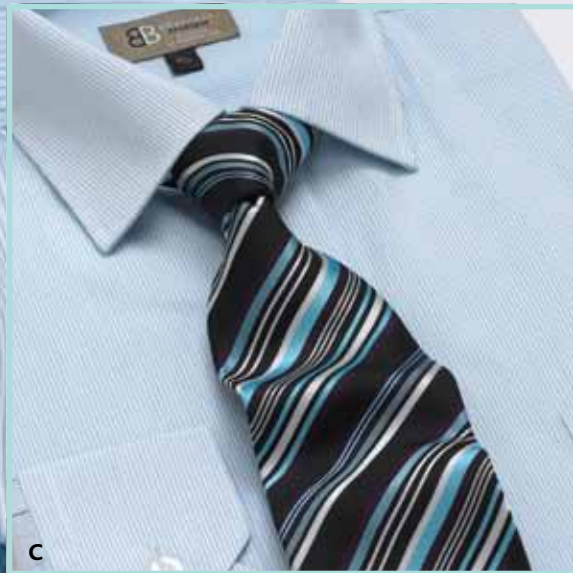
**B** Club Stripe Tie  
Order Club TAB107

**C** Lilac Fine Herringbone Tie  
Order Palette TAB102

**D** Diamonds Tie  
Order Diamonds TAB110

**E** Fuchsia Fine Herringbone Tie  
Order Palette TAB103





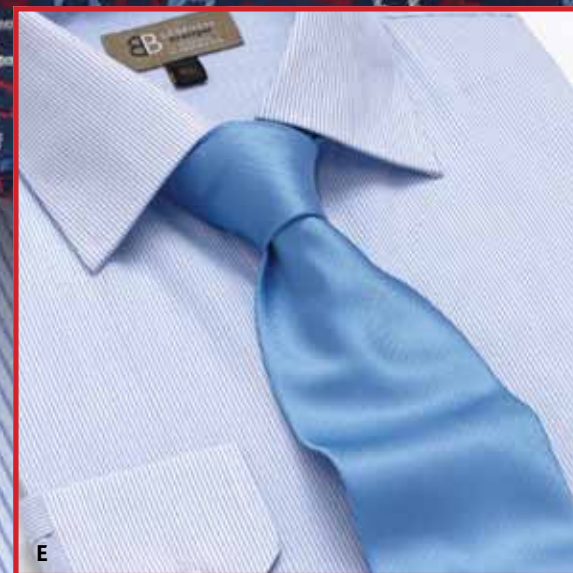
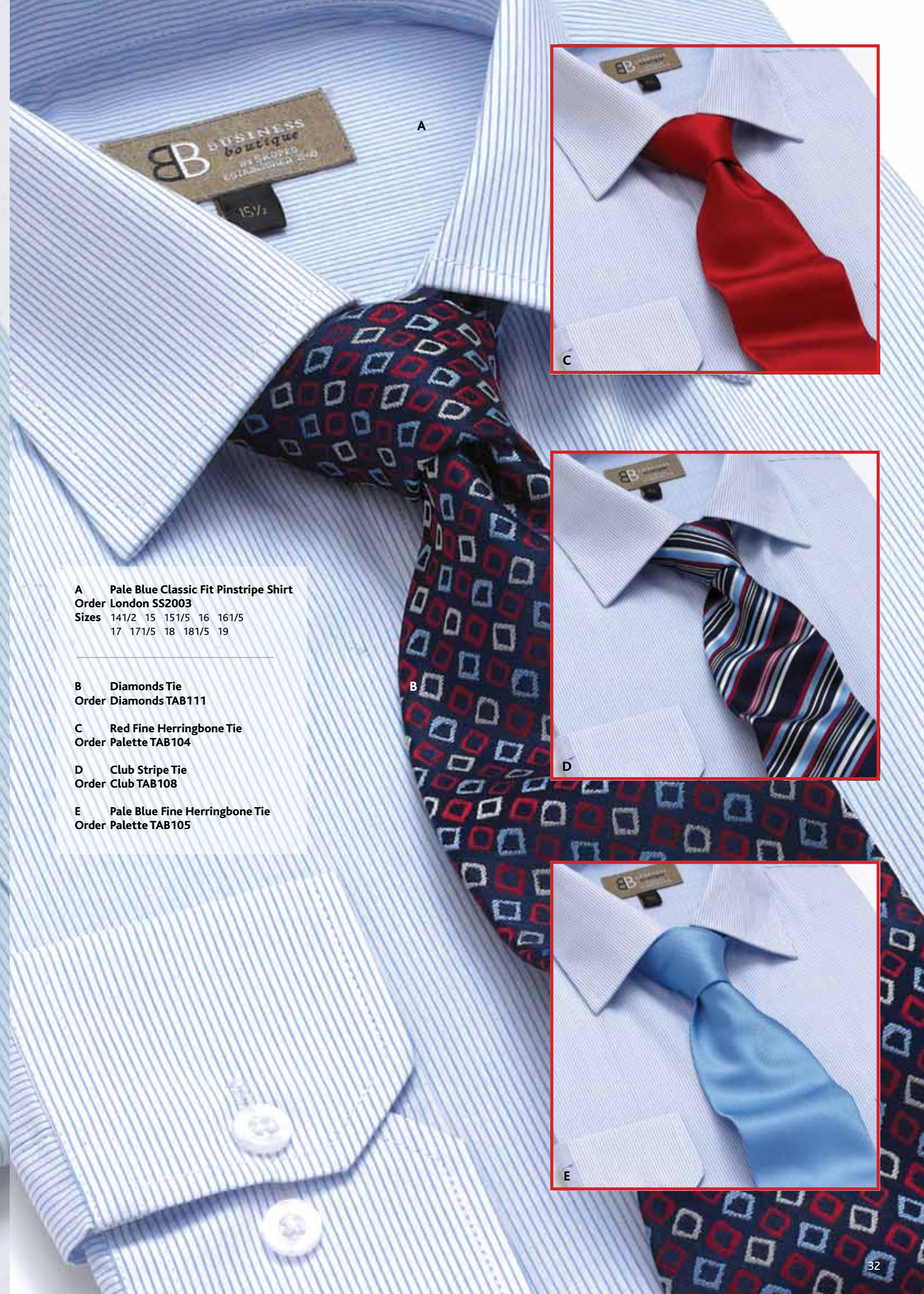
**A Aqua Classic Fit Pinstripe Shirt**  
**Order London SS2001**  
**Sizes** 141/2 15 151/5 16 161/5  
 17 171/5 18 181/5 19

**B Aqua Fine Herringbone Tie**  
**Order Palette TAB100**

**C Club Stripe Tie**  
**Order Club TAB106**

**D Plum Fine Herringbone Tie**  
**Order Palette TAB101**

**E Diamonds Tie**  
**Order Diamonds TAB109**



**A Pale Blue Classic Fit Pinstripe Shirt**  
**Order London SS2003**  
**Sizes** 141/2 15 151/5 16 161/5  
 17 171/5 18 181/5 19

**B Diamonds Tie**  
**Order Diamonds TAB111**

**C Red Fine Herringbone Tie**  
**Order Palette TAB104**

**D Club Stripe Tie**  
**Order Club TAB108**

**E Pale Blue Fine Herringbone Tie**  
**Order Palette TAB105**











Business Boutique

Key Attributes

LOOK CUSTOM LIMITED

- Sharply styled, premium tailoring collection. Easy care machine washable
- Colour coordinated, easy care shirt options
- Contemporary print blouse option in modern, easy care fabric
- Premium, fashionable knitwear collection offers cost effective, smart and comfortable alternative to a tailored jacket
- Versatile accessory options to complete a unique look
- High quality, comfortable, easy care fabrics throughout

Product Ref	Style Details	Colour	Order Code	Size Range
<b>Waldorf</b> <div></div>	Single Breasted, 2 Buttons. Breast Pocket, 2 Side Pockets, Out Ticket Pocket. Centre Vent. 2 Inside Pockets	Grey Birdseye	WWJ503	6-18 Petite 6-24 Regular 8-18 Tall
<b>Ritz</b> <div></div>	Back Zip & Vent. Pleated Waist, Side Pockets. Fully Lined, Includes Belt.	Grey Birdseye	WWD603	6-20 Regular
<b>Dorchester</b> <div></div>	Flat Front With Front Zip. Deep Waistband Includes Belt. Side Pockets, Lined To The Knee. Front Cash Pocket.	Grey Birdseye	WWT703	6-20 Short (29") 6-24 Regular (31") 6-24 Long (36" U/F)
<b>Royale</b> <div></div>	Pencil Skirt, Back Zip & Vent. Deep Waistband Includes Belt. Fully Lined.	Grey Birdseye	WWS803	6-16 Short (21") 6-24 Regular (24") 6-24 Long (27")
<b>Langham</b> <div></div>	Single Breasted With Collar. 5 Buttons. 2 Front Pockets. Adjustable Back.	Grey Birdseye	WWW903	6-24 Regular

Product Ref	Style Details	Colour	Order Code	Size Range
<b>Grosvenor</b> <div></div>	Single Breasted, 2 Buttons. Tailored Fit. 2 Slant Side & Out Ticket Pocket. 4 Inside Pockets.	Grey Birdseye	MM1726	36-46 Short 36-52 Regular 38-46 Long
<b>Eaton</b> <div></div>	Flat Front, Belt Loops. Front Cash Pocket 2 Slant Side & 2 Hip Pockets. Lined To The Knee.	Grey Birdseye	MM7726	30-40 Short (29") 30-44 Regular (31") 30-44 Long (33") 50-48 Xlong (37" U/F)
<b>Berkeley</b> <div></div>	Single Breasted With Collar. 5 Buttons. 2 Front Pockets. Adjustable Back.	Grey Birdseye	MM1226	36-52 Regular

### Technical Specification

#### Suiting Fabric

64% Wool 34% Viscose 2% Lycra  
Weft Stretch

#### Weight

250g/m2

#### Fabric Performance

Martindale Abrasion: 50,000+To End Point  
Pilling: Grade 4  
Colour Fastness: Grade 4  
Shrinkage: Negligible

#### Care

Machine Washable at 40°  
Can Be Dry Cleaned

#### Washing

- Wash As Wool. Wash Like Colours Together
- Remove Immediately Cycle Ends
- Hang To Dry Naturally
- Do Not Tumble Dry
- Do Not Use Softeners
- Iron Over A Damp Cloth On A Dot 2 Setting

### WHO WEARS IT...

Business Boutique is aimed at companies which place exceptionally strong values on image. Such organisations may previously have had a bespoke uniform with all the disadvantages of high minimum order quantities and long delivery schedules. Business Boutique offers a simple solution to create a completely coordinated look.

Product Ref	Style Details	Colour	Order Code	Size Range
<b>Spectrum Ladies Cardigan</b>	62% Viscose 38% Nylon Long Sleeve, V Neck. Contrast Edge & Cuff Feature Ruffle Hem	Charcoal + Aqua/Plum Charcoal + Lilac/Fuchsia Charcoal + Blue/Red Navy + Aqua/Plum Navy + Lilac/Fuchsia Navy + Blue/Red	SWK404 SWK405 SWK406 SWK407 SWK408 SWK409	XS - (4/6) S - (8/10) M - (12/14) L - (16/18) XL - (20/22) 2XL - (24/26)
<b>Panorama Ladies Sweater</b>	62% Viscose 38% Nylon Short Sleeve Round Neck Feature Ruffle Sleeve & Hem	Aqua Plum Lilac Fuchsia Red Navy	SWK410 SWK411 SWK412 SWK413 SWK414 SWK415	XS - (4/6) S - (8/10) M - (12/14) L - (16/18) XL - (20/22) 2XL - (24/26)
<b>Petals Blouse</b>	100% Soft Touch Polyester Tailored Fit Short Sleeve Pleated Sleeve With Adjustable Fasten	Aqua/Plum Lilac/Fuchsia Pale Blue/Red	WWB112 WWB113 WWB114	6-24
<b>London Ladies Shirt</b>	65% Polyester 35% Cotton Tailored Fit Long Sleeve Adjustable Cuff Bias Cut Front Placket Petals Design	Aqua Pinstripe Lilac Pinstripe Pale Blue Pinstripe	WWB115 WWB116 WWB117	6-24
<b>Petals Scarf</b>	100% Polyester Chiffon Petals Design	Aqua/Plum Lilac/Fuchsia Pale Blue/Red	WA118 WA119 WA120	1 Size
<b>Palette Scarf</b>	100% Polyester Chiffon Block Colour Design	Aqua/Plum Lilac/Fuchsia Pale Blue/Red	WA121 WA122 WA123	1 Size
<b>Club Scarf</b>	100% Polyester Chiffon Diagonal Stripe Design	Aqua/Plum Lilac/Fuchsia Pale Blue/Red	WA124 WA125 WA126	1 Size
<b>Diamonds Scarf</b>	100% Polyester Chiffon Diamonds Design	Aqua/Plum Lilac/Fuchsia Pale Blue/Red	WA127 WA128 WA129	1 Size

Product Ref	Style Details	Colour	Order Code	Size Range
<b>Primo Mens Sweater</b>	14 Gauge Knit 50% Cotton 50% Acrylic V Neck, Long Sleeve, Ribbed Hem & Cuff	Charcoal Navy	MMK402 MMK403	S M L XL 2XL
<b>London Mens Shirt</b>	65% Polyester 35% Cotton Classic Fit, Long Sleeve Semi Cutaway Collar Adjustable Cuff	Aqua Pinstripe Lilac Pinstripe Pale Blue Pinstripe	SS2001 SS2002 SS2003	14.5 - 19 Including Half Sizes
<b>Palette Tie</b>	100% Polyester Fine Herringbone Weave	Aqua Plum Lilac Fuchsia Red Pale Blue	TAB100 TAB101 TAB102 TAB103 TAB104 TAB105	1 Size
<b>Club Tie</b>	100% Polyester Diagonal Stripe Design	Aqua/Plum Lilac/Fuchsia Pale Blue/Red	TAB106 TAB107 TAB108	1 Size
<b>Diamonds Tie</b>	100% Polyester Diamonds Design	Aqua/Plum Lilac/Fuchsia Pale Blue/Red	TAB109 TAB110 TAB111	1 Size





Contemporary collection is a direct replacement for Skopes U:P Ultimate Performance collection but now with twice the durability of the original. A range of fresh, modern updated styles fittingly enough to be renamed Contemporary Collection.



### Practical

Superb detailing provides practical solutions for carrying everyday items.



### Lifetime Stain Resistant

Undetectable layers of treatment using nanotechnology provide a strong and long lasting barrier against stains and spills reducing the need for frequent washing.



### Comfort

Lycra provides the fabric with stretch allowing for ease of movement and keeps garments in good shape.



### Machine Washable

No more dry cleaning. All Contemporary Collection garments can be machine washed.



### Wrinkle free

Nanotechnology is used to enhance crease resistance and recovery ensuring good looks for the whole working day and not just for the first hour

web

[www.lookcustom.co.uk](http://www.lookcustom.co.uk)

call

01923 800013

email

[sales@lookcustom.co.uk](mailto:sales@lookcustom.co.uk)



**A Navy Tailored Fit Jacket**  
**Order** Excelsior 3000 MM1219  
**Sizes** 36-46 Short  
 36-52 Regular  
 38-46 Long

**B Navy Tailored Fit Trouser**  
**Order** Excalibur 3000 MM7219  
**Sizes** 30-44 Short  
 30-44 Regular  
 30-44 Long  
 30-48 Xlong

**C Navy Tailored Fit Jacket**  
**Order** Valerie 3000 WWJ471  
**Sizes** 6-18 Petite  
 6-20 Regular  
 8-18 Tall

**D Navy Straight Skirt**  
**Order** Odette 3000 WWS471  
**Sizes** 6-16 Short  
 6-26 Regular  
 6-26 Long



# Contemporary



**A Navy Classic Fit Jacket**  
**Order** Gabrielle 3000 WWJ461  
**Sizes** 6-18 Petite  
 6-26 Regular  
 8-18 Tall

**B Navy Straight Leg Trousers**  
**Order** Aimee 3000 WWT461  
**Sizes** 6-20 Short  
 6-26 Regular  
 6-26 Long

**C Navy Straight Skirt**  
**Order** Odette 3000 WWS471  
**Sizes** 6-16 Short  
 6-26 Regular  
 6-26 Long

**A Navy Tailored Fit Jacket**  
**Order** Excelsior 3000 MM1219  
**Sizes** 36-46 Short  
 36-52 Regular  
 38-46 Long

**B Navy Tailored Fit Trousers**  
**Order** Excalibur 3000 MM7219  
**Sizes** 30-44 Short  
 30-44 Regular  
 30-44 Long  
 30-48 Xlong



wool  
 plus  
 LYCRA®





HIGH PERFORMANCE



SUPREME COMFORT



MODERN EDGE



SUPERB DETAILS



STAIN RESISTANT



CLEVER THINKING

## CONTEMPORARY COLLECTION KEY ATTRIBUTES

- Highest standards for durability
- Lifetime stain resistance reduces the need for frequent washing
- Lycra for comfort
- Nanotechnology for exceptional crease resistance and recovery
- Easy care machine washable
- Practical solutions for carrying everyday items
- Designed to stay looking good throughout the working day, not just the first hour



Product Ref	Style Details	Colour	Order Code	Size Range
<b>Gabrielle 3000</b>	Single Breasted 3 Buttons Plain Back Stitched Edge Lapels & Pockets Slant Side Pockets 4 Inside Pockets	Navy	WWJ461	6-18 Petite 6-26 Regular 8-18 Tall
<b>Valerie 3000</b>	Single Breasted 2 Buttons Tailored Fit Stitched Edge Lapels & Pockets 2 Side Pockets Feature Waist Seam & Back Panel 4 Inside Pockets	Navy	WWJ471	6-18 Petite 6-20 Regular 8-18 Tall
<b>Aimee 3000</b>	Low Waist Front Zip Fasten Straight Leg Deep Waistband Lined To The Knee Side Pockets	Navy	WWT461	6-20 Short (29") 6-26 Regular (31") 6-26 Long (36" U/F)
<b>Odette 3000</b>	Straight Skirt Back Zip & Vent Deep Waistband Fully Lined	Navy	WWS471	6-16 Short (21") 6-26 Regular (24") 6-26 Long (27")
Product Ref	Style Details	Colour	Order Code	Size Range
<b>Excelsior 3000</b>	Single Breasted 2 Buttons Tailored Fit Stitched Edge Lapels & Pockets Slant Side Pockets Out Ticket Pocket 5 Inside Pockets	Navy	MM1219	36-46 Short 36-52 Regular 38-46 Long
<b>Excalibur 3000</b>	Flat Front Tailored Fit Front Cash Pocket 2 Slant Side & 2 Hip Pockets Lined To The Knee	Navy	MM7219	30-44 Short (29") 30-44 Regular (31") 30-44 Long (33") 30-48 Xlong (36" U/F)

### TECHNICAL SPECIFICATION

**Suiting Fabric**  
50% Wool 48.5% Polyester 1.5% Lycra  
Weft Stretch  
Nano Finish For Lifetime Oil & Water Repellency

**Weight**  
285G

**Fabric Performance**  
Martindale Abrasion: 80,000+ With No Threads Breaking  
**Pilling:** Grade 4-5  
**Colour Fastness:** Grade 4-5  
**Shrinkage:** Negligible  
**Wrinkle Recovery:** Grade 4 After 6 Hours

**Care**  
Machine Washable  
Can Be Dry Cleaned

**Washing**

- Wash As Wool. Wash Like Colours Together
- Remove Immediately Cycle Ends
- Hang To Dry Naturally
- Do Not Tumble Dry
- Do Not Use Softeners
- Iron Using A 2 Dot Setting Over A Damp Cloth

### WHO WEARS IT...

- Airlines
- Airports
- Cinemas
- Hotels
- Banks & Building Societies
- Facilities Management
- Retailers
- Department Stores
- Government Agencies
- House Builders
- Housing Associations
- General office wear

web

www.lookcustom.co.uk

call

01923 800013

email

sales@lookcustom.co.uk





247mode

## Perfectly Suited

This sophisticated 8 piece collection is all about wonderful attention to detailing rarely seen in corporatewear collections. 247 mode is a luxurious wool rich fabric blended with polyester for durability and Lycra for comfort. The fabric also has Teflon stain protection against stains and spills.

Our biggest seller, 247 mode now comes in a completely coordinating range of extended colours for men and women in 5 colour options.



Machine Washable



**LOOK CUSTOM**  
LIMITED



**A** Grey Classic Fit Jacket  
**Order** Oslo MM1032  
**Sizes** 36-52 Short  
36-62 Regular  
38-62 Long

**B** Grey Classic Fit Trousers  
**Order** Otis Grey MM7132  
**Sizes** 30-48 Short  
30-48 Regular  
30-48 Long  
50-58 Xlong

**C** Grey 3 Button Jacket  
**Order** Juliette WWJ253  
**Sizes** 6-18 Petite  
6-26 Regular  
8-18 Tall

**D** Grey Straight Skirt  
**Order** Marie WWS253  
**Sizes** 6-16 Short  
6-26 Regular  
6-26 Long

web

[www.lookcustom.co.uk](http://www.lookcustom.co.uk)

call

01923 800013

email

[sales@lookcustom.co.uk](mailto:sales@lookcustom.co.uk)



**A** Grey 3 Button Jacket  
Order Juliette WWJ253  
Sizes 6-18 Petite  
6-26 Regular  
8-18 Tall

**B** Grey Bootcut Trouser  
Order Monique WWT263  
Sizes 6-20 Short  
6-26 Regular  
6-26 Long

**C** Grey Straight Skirt  
Order Marie WWS253  
Sizes 6-16 Short  
6-26 Regular  
6-26 Long

247mode



A

C

E

A

B

D

**A** Black 3 Button Jacket  
Order Juliette Black WWJ254  
Sizes 6-18 Petite  
6-26 Regular  
8-18 Tall

**B** Black Bootcut Trouser  
Order Monique WWT264  
Sizes 6-20 Short  
6-26 Regular  
6-26 Long

**C** Black Classic Fit Jacket  
Order Oslo MM1027  
Sizes 36-52 Short  
36-62 Regular  
38-62 Long

**D** Black Classic Fit Trouser  
Order Otis MM7127  
Sizes 30-48 Short  
30-48 Regular  
30-48 Long  
50-58 Xlong

**E** Black Waistcoat  
Order Ohio MM1127  
Sizes 36-52 Regular



247mode

A

C

B

C

C

D

**A** Navy Stripe 1 Button Jacket  
**Order** Brigitte Navy Stripe WWJ262  
Brigitte Navy WWJ261  
**Sizes** 6-18 Petite  
6-20 Regular  
8-18 Tall

**B** Navy Stripe Straight Skirt  
**Order** Marie Navy Stripe WWS252  
Marie Navy WWS251  
**Sizes** 6-16 Short  
6-26 Regular  
6-26 Long

**C** Navy Stripe Wide Leg Trousers  
**Order** Isabelle Navy Stripe WWT252  
Isabelle Navy WWT251  
**Sizes** 6-20 Short  
6-26 Regular  
6-26 Long

**D** Navy Stripe 3 Button Jacket  
**Order** Juliette Navy Stripe WWJ252  
Juliette Navy WWT251  
**Sizes** 6-18 Petite  
6-26 Regular  
8-18 Tall

**E** Navy Stripe Bootcut Trousers  
**Order** Monique Navy Stripe WWT262  
Monique Navy WWT261  
**Sizes** 6-20 Short  
6-26 Regular  
6-26 Long

**F** Navy Stripe Classic Fit Jacket  
**Order** Oslo Navy Stripe MM1028  
Oslo Navy MM1030  
**Sizes** 36-52 Short  
36-62 Regular  
38-62 Long

**G** Navy Stripe Classic Fit Trousers  
**Order** Otis Navy Stripe MM7128  
Otis Navy MM7130  
**Sizes** 30-48 Short  
30-48 Regular  
30-48 Long  
50-58 Xlong

G

F

E

web

www.lookcustom.co.uk

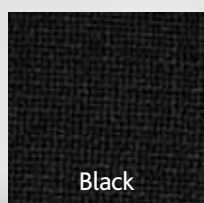
call

01923 800013

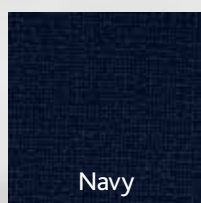
email

sales@lookcustom.co.uk





Black



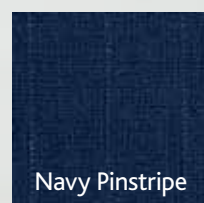
Navy



Charcoal



Grey



Navy Pinstripe

## Choose Your Colour



## Choose Your Style



## 247mode KEY ATTRIBUTES

- Wonderful attention to details designed to make you look great and feel confident
- Practical details such as half lined trousers with pockets and internal pockets in jackets
- Stretch Lycra for comfort and quick crease recovery
- Teflon stain protection to reduce cleaning frequency
- Wool rich (60%) provides warmth in winter and is cool in summer thanks to excellent breathable qualities
- Easy care machine washable
- Completely matching male and female options



Product Ref	Style Details	Colour	Order Code	Size Range
<b>Juliette</b> 	Single Breasted, 3 Buttons. Plain Back Slant Side Pockets Feature Lining With Contrast Piped Seams 2 Inside Pockets Stitched Edge Lapels And Pockets	Navy	WWJ251	6-18 Petite
		Navy Stripe	WWJ252	6-26 Regular
		Black	WWJ254	8-18 Tall
		Grey	WWJ253	
		Charcoal	WWJ256	
<b>Brigitte</b> 	Single Breasted, 1 Button, Centre Vent Slant Side Pockets Feature Lining With Contrast Piped Seams 2 Inside Pockets Stitched Edge Lapels And Pockets	Navy	WWJ261	6-18 Petite
		Navy Stripe	WWJ262	6-20 Regular 8-18 Tall
<b>Monique</b> 	Bootcut, Front Zip. Feature 2 Piece Waistband With Twin Button Fasten. Slant Side Pockets Lined To The Knee	Navy	WWT261	6-20 Short (29")
		Navy Stripe	WWT262	6-26 Regular (31")
		Black	WWT264	6-26 Long (36" U/F)
		Grey	WWT263	
		Charcoal	WWT266	
<b>Isabelle</b> 	Wide Leg, Front Zip. Deep Waistband With Wrap Over Fasten. Belt Loops Slant Side Pockets Lined To The Knee	Navy	WWT251	6-16 Short (21")
		Navy Stripe	WWT252	6-26 Regular (24") 6-26 Long (27")
<b>Marie</b> 	Straight Skirt Back Zip & Vent Fully Lined	Navy	WWS251	6-16 Short (21")
		Navy Stripe	WWS252	6-26 Regular (24")
		Black	WWS254	6-26 Long (27")
		Grey	WWS253	
		Charcoal	WWS256	

### TECHNICAL SPECIFICATION

#### Suiting Fabric

60% Wool 38% Polyester 2% Lycra  
+ Teflon Fabric Protection

#### Weight

280G

#### Fabric Performance

Martindale Abrasion: 40,000+ With

No Threads Breaking

Pilling: Grade 4-5

Colour Fastness: Grade 4-5

Shrinkage: Negligible

#### Care

Machine Washable

Can Be Dry Cleaned

#### Washing

- Wash As Wool. Wash Like Colours Together
- Remove Immediately Cycle Ends
- Hang To Dry Naturally
- Do Not Tumble Dry
- Do Not Use Softeners
- Iron Using A 2 Dot Setting Over A Damp Cloth

\*\* Oslo Black also in sizes 34 Regular & Short.

\* Oslo Charcoal in sizes up to 52 Chest only

\*\* Otis Black also in sizes 28 Regular & Short

\* Otis Charcoal in sizes up to 48 Waist only.

Product Ref	Style Details	Colour	Order Code	Size Range
<b>Oslo</b> 	Style Details Single Breasted, 2 Buttons. Side Vents Contrast Linings With Columbia Stitching Internal Sweat Pads 4 Inside Pockets	Black**	MM1027	36-52 Short
		Navy Stripe	MM1028	36-62 Regular
		Black Stripe	MM1029	38-62 Long
		Navy	MM1030	
		Charcoal*	MM1031	
<b>Otis</b> 	Flat Front Belt Loops 2 Slant Side Pockets 2 Hip Pockets Lined To The Knee Heel Taped Hems	Black**	MM7127	30-48 Short (29")
		Navy Stripe	MM7128	30-48 Regular (31")
		Black Stripe	MM7129	30-48 Long (33")
		Navy	MM7130	50-58 Xlong (37" U/F)
		Charcoal*	MM7131	
<b>Ohio</b> 	Single Breasted 4 Buttons Contrast Back Linings To Match Jackets 2 Front Pockets Adjustable Back Strap & Buckle	Black**	MM1127	36-52 Regular
		Navy Stripe	MM1128	
		Black Stripe	MM1129	
		Navy	MM1130	
		Charcoal*	MM1131	
		Grey	MM1132	

web

01923 800013

email

www.lookcustom.co.uk

sales@lookcustom.co.uk





essentials

## Pretty Tough

With 1000s of satisfied wearers across a wide range of industries Essentials Collection has become a proven winner thanks to its combination of market leading value, easiest possible care with the minimum fuss and soft yet incredibly durable fabric. This very feminine fabric drapes beautifully and will stand up to the most demanding environments with confidence.



Machine  
Washable

**LOOK CUSTOM**  
LIMITED

A Black Shift Dress  
Order Gigi Black WWD254  
Sizes 6-20 Regular  
Belt Included





A    **Black 3 Button Jacket**  
Order **Danielle Black WWJ334**  
Sizes 6-18 Petite  
6-28 Regular  
8-18 Tall

essentials

A



B    **Black Low Waist Bootcut Trouser**  
Order **Giselle Black WWT344**  
Sizes 6-20 Short  
6-28 Regular  
6-28 Long



C    **Black Comfort Waist Skirt**  
Order **Sylvie WWS334**  
Sizes 6-16 Short  
6-28 Regular  
6-28 Long



D    **Black Classic Fit Trouser**  
Order **Zoe WWT274**  
Sizes 6-20 Short  
6-28 Regular  
6-28 Long

web

[www.lookcustom.co.uk](http://www.lookcustom.co.uk)

call

01923 800013

email

[sales@lookcustom.co.uk](mailto:sales@lookcustom.co.uk)



A    Black Waistcoat  
Order Nina WWW254  
Sizes 6-28 Regular

essentials



A

A    Navy Shift Dress  
Order Gigi Navy WWD251  
Sizes 6-20 Regular  
Belt Included



A



email



Machine Washable

web

[www.lookcustom.co.uk](http://www.lookcustom.co.uk)

call

01923 800013



**A Navy 3 Button Jacket**  
**Order Danielle Navy WWJ331**  
**Sizes** 6-18 Petite  
6-28 Regular  
8-18 Tall

**B Navy Low Waist Bootcut Trouser**  
**Order Giselle Navy WWT341**  
**Sizes** 6-20 Short  
6-28 Regular  
6-28 Long

**C Navy Comfort Waist Skirt**  
**Order Sylvie Navy WWS331**  
**Sizes** 6-16 Short  
6-28 Regular  
6-28 Long

**D Navy Classic Fit Trouser**  
**Order Zoe Navy WWT271**  
**Sizes** 6-20 Short  
6-28 Regular  
6-28 Long

A



B



## essentials



C



D

## essentials KEY ATTRIBUTES

- Perfect for those on tight budgets without sacrificing quality
- Easy care, machine washable. Dries very quickly and very easy to iron, if required
- Soft feminine fabric drapes beautifully yet exceptionally hard wearing
- Good crease resistance
- Versatile collection of styles offer choices to suit all ages, shapes and sizes
- Extensive range of sizes and fittings

# Pretty Tough



Product Ref	Style Details	Colour	Order Code	Size Range
<b>Danielle</b> 	Single Breasted, 3 Buttons Plain Back Contrast Colour Linings Slant Side Pockets	Navy Black	WWJ331 WWJ334	6-18 Petite 6-28 Regular 8-18 Tall
<b>Gigi</b> 	Pleat Front Neckline Cap Sleeve Pleated Waist Back Zip & Vent Fully Lined Belt Included	Navy Black	WWD251 WWD254	6-20 Regular
<b>Giselle</b> 	Low Waist, Bootcut, Front Zip. Side Pockets	Navy Black	WWT341 WWT344	6-20 Short (29") 6-28 Regular (31") 6-28 Long (36" U/F)
<b>Zoe</b> 	Classic Fit Straight Leg Front Zip Side Pockets Key Loop	Navy Black	WWT271 WWT274	6-20 Short (29") 6-28 Regular (31") 6-28 Long (36" U/F)
<b>Nina</b> 	Single Breasted, 5 Buttons. 2 Front Pockets Plain Black Lining Adjustable Back Strap & Buckle	Black	WWW254	6-28 Regular
<b>Sylvie</b> 	Straight Skirt Darted Front & Back Back Zip & Vent Fully Lined	Navy Black	WWS331 WWS334	6-16 Short (21") 6-28 Regular (24") 6-28 Long (27")

### TECHNICAL SPECIFICATION

**Suiting Fabric**  
100% Double Layer Polyester

**Weight**  
390G

**Fabric Performance**  
Martindale Abrasion: 40,000+ With  
No Threads Breaking  
**Pilling:** Grade 5  
**Colour Fastness:** Grade 4-5  
**Shrinkage:** Non

**Care**  
Machine Washable  
Can Be Dry Cleaned

**Washing**  
- Wash As Wool. Wash Like  
Colours Together  
- Remove Immediately Cycle Ends  
- Hang To Dry Naturally  
- Do Not Tumble Dry  
- Do Not Use Softeners  
- Iron Using A 2 Dot Setting Over A  
Damp Cloth

### WHO WEARS IT...

- Building Societies
- Hotels & Hospitality
- Conference & Exhibition Centres
- Cruise Ships
- Hospitals
- Holiday Parks
- Housing Associations
- Leisure Centres
- Universities
- Councils
- Restaurants
- Retailers
- Security
- Shopping Centres
- Supermarkets
- General office wear



*Add a splash of colour...*



 **LOOK CUSTOM**  
**LIMITED**

web

[www.lookcustom.co.uk](http://www.lookcustom.co.uk)

call

01923 800013

email

[sales@lookcustom.co.uk](mailto:sales@lookcustom.co.uk)